

Report & Quote



9359 Feron Blvd.
Rancho Cucamonga, Ca.
91730 Ph.: (909) 941-7260
Fax: (909) 948-2063

To:	Smart Company	Attn:	Valued Customer	
Email:	vc@smartcompany.com	From:	Pamco Experts	
Phone:	555-5555	Pages:	4	Your P.O. # 12-345
Re:	Rotating Equipment Repair	Date:	Current Date	Job #46000 (and counting!)

Quote is valid for 30 days after above quoted date.

Dear Customer,

We are pleased to provide you with the following Report and Quote for the repair of your Gearbox model D123-789 s/n 555 with a 25.59:1 ratio as follows:

We advise you that the gearbox shows signs of wear and some damage as outlined below. The gears and case are in good condition and may be reused if cleaned up and requalified. We recommend replacing all bearings & seals, the heat exchanger, the pressure gauge, the oil sight and bypass relief valve all to be replaced with new. Gearbox will be reassembled with proper bearing endplay and backlash. Repaired parts include the welding and machining of the low speed and high speed shafts to restore original size and prevent leaking.

New parts	\$	2,200	(sample)
Weld and repair parts	\$	1,500	(sample)
All mechanical labor	\$	2,500	(sample)
Repair Total	\$	6,200	(sample)

Delivery Included. No tax on labor.

Thank you for the opportunity to quote your projects. If you have any questions please don't hesitate to contact me 909-941-7260.

Sincerely,

Pamco Manager



Failure Analysis Report



Incoming Inspection Photos



LUFKIN
EXTRUDER DRIVE

SIZE SERIAL NO.

A.G.M.A. RATING FOR INPUT SPEED RPM

H.P. @ S.F.I.O.

RATIO

OUTPUT RPM

DRIVE GEAR

DRIVEN GEAR

FOR RATINGS AT OTHER SPEEDS CONSULT LUFKIN
RECOMMENDED SERVICE FACTOR 1.25

LUBRICATION

BEFORE STARTING FILL WITH GALS. LUBRICANT

AMBIENT TEMPERATURE	15°-60° F	50°-125° F	100°-150° F
A.G.M.A. LUBRICANT	NO. 3	NO. 4	NO. 5

CHANGE OIL AFTER FIRST 300 HRS. THEN EVERY 2500 HRS., OR SIX MONTHS OF NORMAL SERVICE. FOR SEVERE SERVICE CHANGE OIL EVERY 1 TO 3 MONTHS.

LUFKIN INDUSTRIES, INC.
LUFKIN, TEXAS

Failure Analysis Photo Report

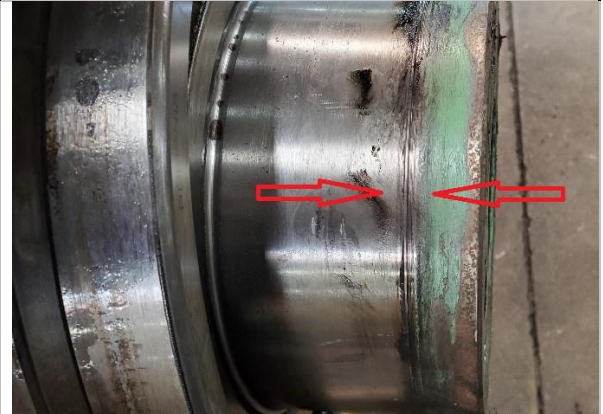


Customer: Smart Company		Job #: 46000 (and counting!)
Date: Current		P.O.#: 12-345
Manufacturer: MFG Co.	Serial#: 3340	Type: Rotating Equipment
Model#: D123-789 s/n 555	Ratio: 24.59:1	

Housing

Comments:

Low speed seal area have excessive wear.
 We recommend weld and repair of the low speed seal area to restore correct housing size.



Comments:

Low speed and high speed gear sets show very little wear.
 We recommend clean and reuse.



Comments:

High speed seal area have excessive wear.
 We recommend weld and repair seal area to restore correct shaft size.



Comments:

All bore dimensions were measured and found to be within correct size tolerance. The housing shows minimal wear and may be reused with minor repairs.
 We recommend powerblasting to clean case, repair of (20) threaded holes and enamel painting of interior to prevent rust.



AFTER PHOTOS

